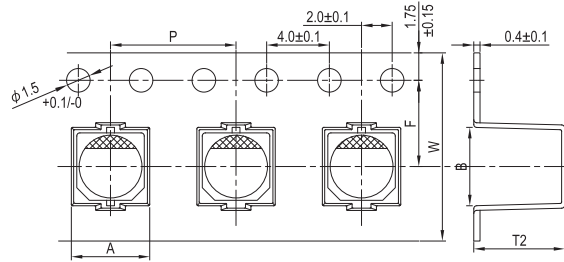


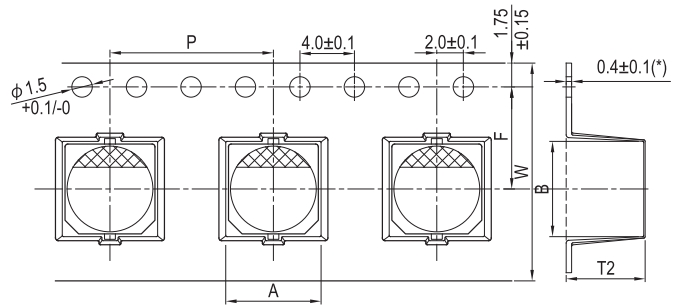
## Taping Specifications for SMD Type (Applicable Standard JIS C 0806-3)

### 1. Carrier Tape

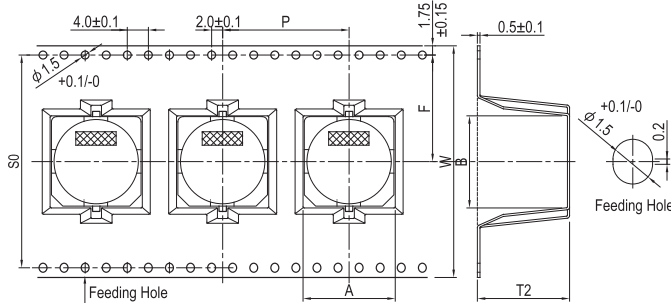
**Fig. 1-1**



**Fig. 1-2**



**Fig. 1-3**



Note: \*1: The case size in the below table are which means the marked with " \* " in Fig. 1-2 is 0.5 mm.  
 \*2: The carrier tape dimensions for 16 ~ 18 φ of the anti-vibration structure are the same as general structure.

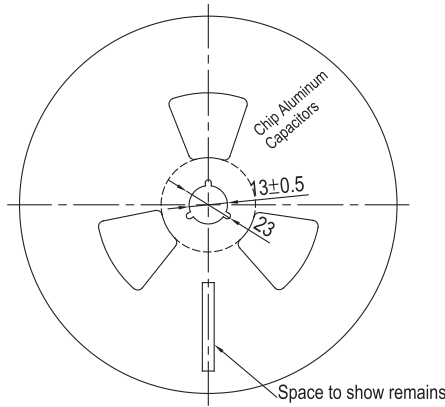
Unit: mm

Type	φ D × L	A	B	F	P	T2	W	S0	Fig. No.	Anti-vibration	
OP-CAP	5 × 4.4	5.7	5.7	5.5	12	4.8	12.0	---	1-2	---	
	5 × 5.7 / 5.8					6.2					
	6.3 × 4.4					4.8					
	6.3 × 5.8 / 5.9	6.2	16.0								
	6.3 × 6.4 / 7.0	7.2 / 7.6									
	6.3 × 7.7	8.3									
	6.3 × 9.5 *1	11.5	16	9.8	24.0						
	8 × 6.7	8.7	8.7	11.5	12	7.4	16.0				
	8 × 7.7				12	8.4					
	8 × 10				16	11.0					
	8 × 12 *1				12.5						
	10 × 7.7	10.7	10.7	11.5	16	8.7	24.0				
10 × 9.9 / 10	11.0										
10 × 12.6 *1	13.0										
4 × 4.5 / 5.3	4.7					4.7		5.5	8	4.8 / 5.8	12.0
4 × 5.7 / 5.8		6.2									
5 × 4.5 / 5.3	5.7	5.7	7.5	12		4.8 / 5.8		16.0			
5 × 5.7 / 5.8					6.2						
5 × 7.0					7.6						
6.3 × 4.5 / 5.3					4.8 / 5.8	24.0					
6.3 × 5.7 / 5.8	6.2										
6.3 × 7.0 / 7.7	7.6 / 8.3										
6.3 × 8.7	9.3										
8 × 6.5	8.7	8.7	11.5	16	7.4	24.0					
8 × 10					11.0						
8 × 10					11.4						
10 × 7.7	10.7	10.7	11.5		8.7		24.0				
10 × 10					11.0						
10 × 12.5 *1					13.0						
10 × 10				11.4							
10 × 16.5 *1	10.7	10.7	17.5	---							
12.5 × 13.5	13.4	13.4	14.2	24	14.5	32.0	28.4	1-3	---		
12.5 × 16					17.0						
12.5 × 13.5	13.7	13.7	20.2		15.0					44.0	40.4
12.5 × 16					17.5						
16 × 16.5	17.5	17.5	20.2	17.0 (17.5)	44.0	40.4					
16 × 21.5				22.2							
18 × 16.5	19.5	19.5	20.2	17.5	44.0	40.4					
18 × 21.5				23.0							
Tolerance	± 0.2	± 0.2	± 0.1	± 0.1	± 0.2	± 0.3	± 0.1				

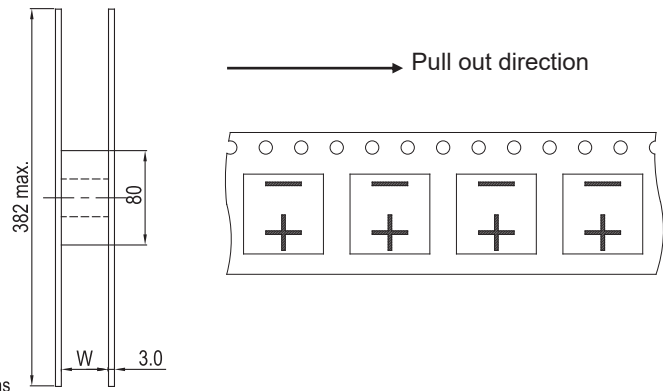
## Taping Specifications for SMD Type

### 2. Reel Package

**Fig. 2-1**



**Fig. 2-2**

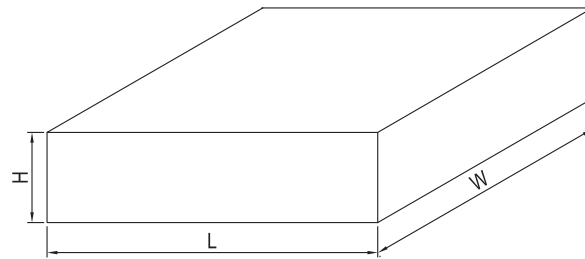


Unit: mm

Case size	3 ~ 5 $\phi$	5 $\phi$ × 7L, 6.3 $\phi$ , 8 $\phi$ × 6.5 / 6.7L	6.3 $\phi$ × 9.5L, 8 $\phi$ × 7.7 ~ 12L, 10 $\phi$	12.5 $\phi$	16 ~ 18 $\phi$
W	14	18	26	34	46

### 3. Packing Specifications

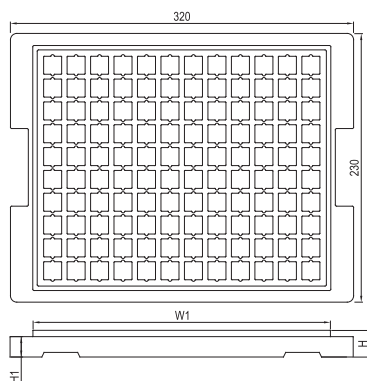
**Fig. 3-1** Outer carton box of carrier tape



Unit: mm

Case size	3 ~ 5 $\phi$	5 $\phi$ × 7L, 6.3 $\phi$ , 8 $\phi$ × 6.5 / 6.7L	6.3 $\phi$ × 9.5L, 8 $\phi$ × 7.7 ~ 12L	10 ~ 12.5 $\phi$	16 ~ 18 $\phi$
H	210	250	330	330	425
W, L	395				

**Fig. 3-2** Chip tray



Dimensions and package quantity

Unit: mm

Case size	W1	H	H1	Q'ty / Tray	Q'ty / Box
12.5 $\phi$ × 13.5L	284	21	18.5	120	600
12.5 $\phi$ × 16L		21	18.5	120	600
16 $\phi$ × 16.5L	284	28	24.0	80	400
16 $\phi$ × 21.5L				80	400
18 $\phi$ × 16.5L				60	300
18 $\phi$ × 21.5L				60	300